

# MS AND MLA CAREER INFORMATION

This information comes from a survey administered to MS (NRE) and MLA students who graduated between December 2015 and April 2016.

Of 108 graduates, 72% (78/108) completed the survey. About 2% of survey respondents are employed in fields outside of environment and sustainability, so their responses are excluded from these statistics.

## SALARY DATA

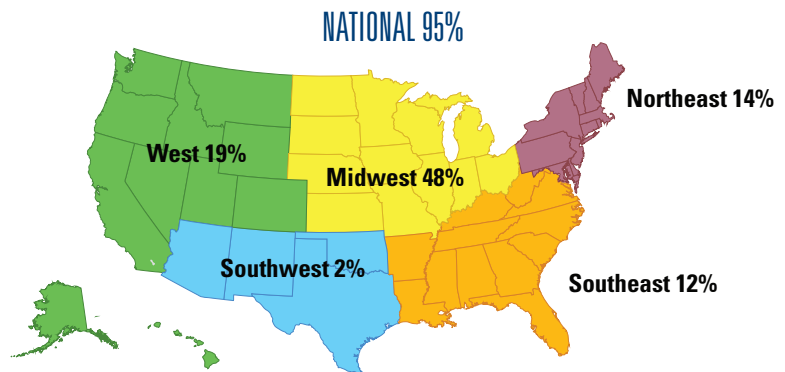
Yearly averages for MS (NRE) and MLA graduates working full-time in environment and sustainability fields within nine months of graduation.

- Dual-degree graduates (MS/MBA, MS/Law, etc.): \$89,200
- MS and MLA graduates: \$56,200
- Overall: \$64,200

## QUICK FACTS:

- 21% of survey respondents graduated with a dual degree. Examples of degrees paired with MS or MLA degrees include business, public health, engineering, economics, public policy, social work, law, and urban planning
- On average, it took MS and MLA graduates seven months from starting a job search to securing a job
- MS and MLA graduates secured employment on average three months after graduation
- Nine months after graduation, 74.3% of respondents had full-time positions; 4.1% were continuing their education
- An additional 12.2% of students had part-time employment, temporary/contract positions, or were engaged in service work
- Graduates' first contact with their current employer was through:
  - **Networking** via alumni and personal connections (46.7%)
  - **Online job postings**, including eRecruiter (33.3%)
  - **Previous work experience**, including internships and master's projects (10%)
  - **U-M on-campus resources** (10%)

## WHERE 2015-2016 GRADUATES ARE EMPLOYED



## INTERNATIONAL 5%



Belize



Panama



Spain

\* Includes full-time, part-time, and temporary positions

# EMPLOYMENT INFORMATION ON MS (NRE) AND MLA GRADUATES WORKING IN ENVIRONMENT AND SUSTAINABILITY FIELDS - DATA FROM THE 2015-2016 ALUMNI SURVEY

## PRIVATE

- AECOM (Water Resource Engineer) ++
- Boston Consulting Group (Consultant)
- Circlepoint (Project Associate) ++
- Customized Energy Solutions (Analyst - Renewable Services) ++
- DTE Energy (Finance & Strategy Associate) #
- Forum Studio (Landscape Architect)
- FWOLD (Landscape Designer) ++\*
- Geronimo Energy (Solar Development Associate)
- Groovy Hopster Farm (Farm Manager)
- Huron Capital Partners (Vice President)
- ICF (Analyst) ++
- ICF (Analyst – Distributed Grid Strategy) #
- Jerry Pate Design (Design Associate) ++\*
- Mission Throttle (Associate) ++#
- Mission Throttle (Associate)
- New South Package (Operations Manager)
- Nike (Supply Chain Innovation Manager) #
- Novomer, Inc. (Business Associate) #
- PA Consulting Group (Analyst)
- PA Consulting Group (Consulting Analyst) #
- Pacific Gas & Electric (MBA Leadership Associate) #
- Puget Sound Energy (Product Development Manager) #
- Land Planning and Design Associates (Project Designer) ++
- Southern California Edison (MBA Leadership Development Program Associate)
- Técnicas Reunidas (Assistant Project Coordinator) ++

## ACADEMIC

- IFRI Forests & Livelihoods: Assessment, Research, Engagement (FLARE) (Database Management & Research Assistant) ++
- Michigan Sea Grant College Program (Communications Editor)
- Michigan Sea Grant/MSU Extension (Extension Educator)
- Michigan Tech Research Institute (Assistant Research Scientist)
- University of Michigan (Project Manager)
- University of Minnesota (Research Scientist) #\*

## NON-PROFIT

- Environmental and Energy Study Institute (Policy Associate)
- Fair Food Network (Communications Associate)
- Friends of Waterfront Seattle (Public Space Activation Assistant)
- Huron-Clinton Metropolitan Authority (Interpreter)
- IslandWood (Environment Educator) ++
- Legacy Land Conservancy (Land Protection Coordinator)
- NSF International (Senior Project Manager)
- Project Healthy Schools (Wellness Coordinator) #
- The Stewardship Network (Project Coordinator)
- The William Davidson Institute (Research Associate)
- World Wildlife Fund (Program Officer)
- Ya'axche Conservation Trust (Botanical Research Project Manager)

## GOVERNMENT

- American Conservation Experience (AmeriCorps Member)
- City of Detroit (Associate Landscape Architect)
- EPA (Environmental Protection Specialist)
- EPA (Ecologist)
- EPA Great Lakes National Program Office - ORISE (EPA ORISE Fellow)
- Lenawee County Conservation District (MAEAP Technician)
- New York Power Authority (Strategy Analyst)
- Peace Corps (Urban Garden Specialist)
- Port Authority of New York & New Jersey (Senior Energy Analyst) #
- San Francisco Public Utilities Commission (Strategic Planning Analyst)

\* Master of Landscape Architecture (MLA)

++ International Student

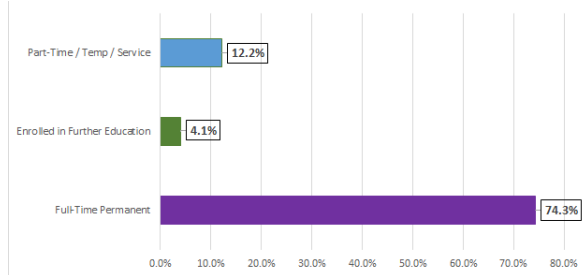
# Dual Degree

# EMPLOYMENT SECTOR

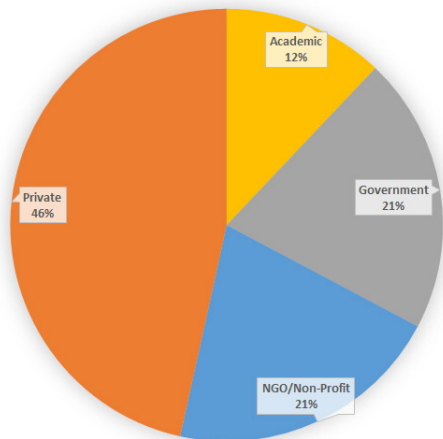
## QUICK FACTS

A total of 90.6% of survey respondents are employed in full-time positions, temporary jobs, or internships, or are continuing their education.

Overall employment statistics for 2015-2016 graduates

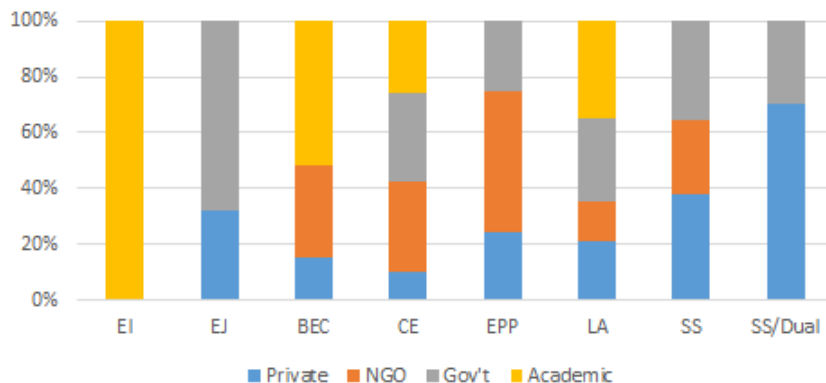


Employment by sector for 2015-2016 graduates



\*Of the graduates working in government, 50% work for the federal government, 8.3% work for a state, and 41.7% work for a city government agency.

Employment sector by field of study for 2015-2016 graduates



# THE CAREER ADVANTAGE

## JANA STEWART

MS/MPH '16 (BEC)

Wellness Coordinator  
at Project Healthy Schools



"The work and classroom experiences I had during my time at U-M are a large reason why my employer was interested in working with me. They liked that I completed several internships

and had practice applying for funding and IRB proposals. My master's project, independent study, internships, and coursework all provided me with a wide range of skills for which I also had real-life practice. They wanted someone who could be a self-guided, independent employee with a lot of different skills, from education and public speaking to project management and grant writing."

## PARKER ANDERSON

MLA/MS '15 (LA/SS)

Research Scientist at  
University of Minnesota



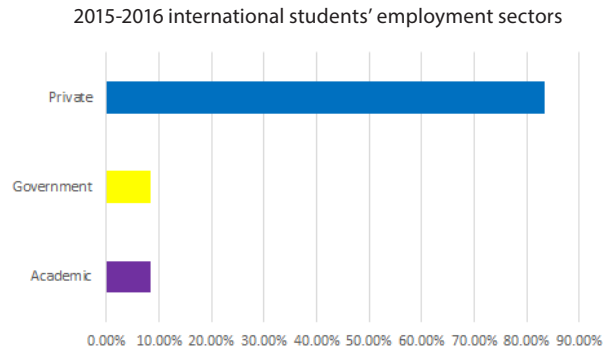
"After several years in the professional world, I was hesitant to return to school. That feeling was quickly eliminated once I took advantage of all the school and university communities had to offer. My program not only

provided me with a deep understanding of the science behind the issues of my interest, but provided me with actual real world experience in addressing these issues and developing solutions. I could not have asked for a better graduate school experience. Go Blue!"

# INTERNATIONAL STUDENT

## QUICK FACTS

About 23% of survey respondents were international students. 67% of these graduates were employed full-time, nine months after graduation. 11% were enrolled in further education and 11% held temporary positions.



## STUDENTS AND ALUMNI CAN:

- Upload resumes
- Apply for jobs and internships online
- Receive customized job postings via email
- View and RSVP for career events (students only)
- Find alumni

## EMPLOYERS CAN:

- Post jobs and internships
- Search student and alumni resumes
- Set up on campus visits
- Create customized resume books

## CAREER SERVICES

- Personalized job search assistance
- General career advising
- Mock interviews
- Career workshops and events
- Resume, CV, and cover letter reviews
- Connections with alumni

**For more information about career services and to access eRecruiter, visit:**  
<http://seas.umich.edu/careers>

## CONTACT INFORMATION

E-mail: [seas-careers@umich.edu](mailto:seas-careers@umich.edu)  
Room 1520, Dana Building

**Ashley Richardson**  
Associate Director, Career Services  
Ph: (734) 764-8088  
E-mail: [ashricha@umich.edu](mailto:ashricha@umich.edu)

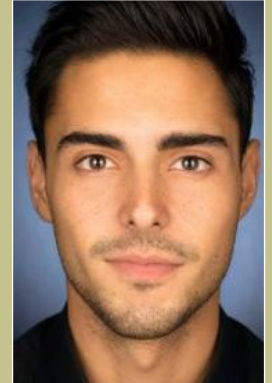
# THE CAREER ADVANTAGE

## VITOR LIRA

MS '16 (BEC/EJ)

*Project Associate at Circlepoint*

"Not only did my master's degree make the difference in the hiring process and my performance at work, the connections I made at Michigan helped me blaze a trail very few people are able to, especially since I am an international student."

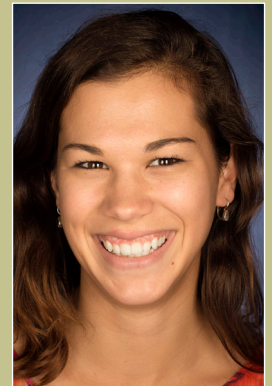


## MEREDITH REISFIELD

MS '16 (SS)

*Senior Project Manager at NSF International*

"The interdisciplinary environment and emphasis on real-world capstone experiences, along with an open and enthusiastic alumni group, all helped me create the grad-school experience I was looking for and find a job that was exactly what I wanted to be doing upon graduating."



## BRITTANY BENNETT

MS '16 (Con Eco)

*Ecologist at the EPA*

"The interdisciplinary focus was crucial to my success in securing a position at the EPA. It was my diverse background in ecology, communications, and policy that set me apart from the rest."



## ALUMNI NETWORKING:

- Over 8,000 living alumni of the school
- Over 575,000 living alumni of the university
- Many alumni actively engaged in recruiting and networking with students