

Welcome to SEAS!

Admitted Student Visit Day

Specialization

Coordinator

Arun Agrawal

arunagra@umich.edu

Address

Dana Building

440 Church Street

Ann Arbor, MI 48109

Website

seas.umich.edu

01 Specialization Overview

Program mission, goals, and overview

02 Faculty

Core and affiliate faculty members

03 Curriculum

Courses, dual degrees, master's projects/thesis

04 Careers and Employment

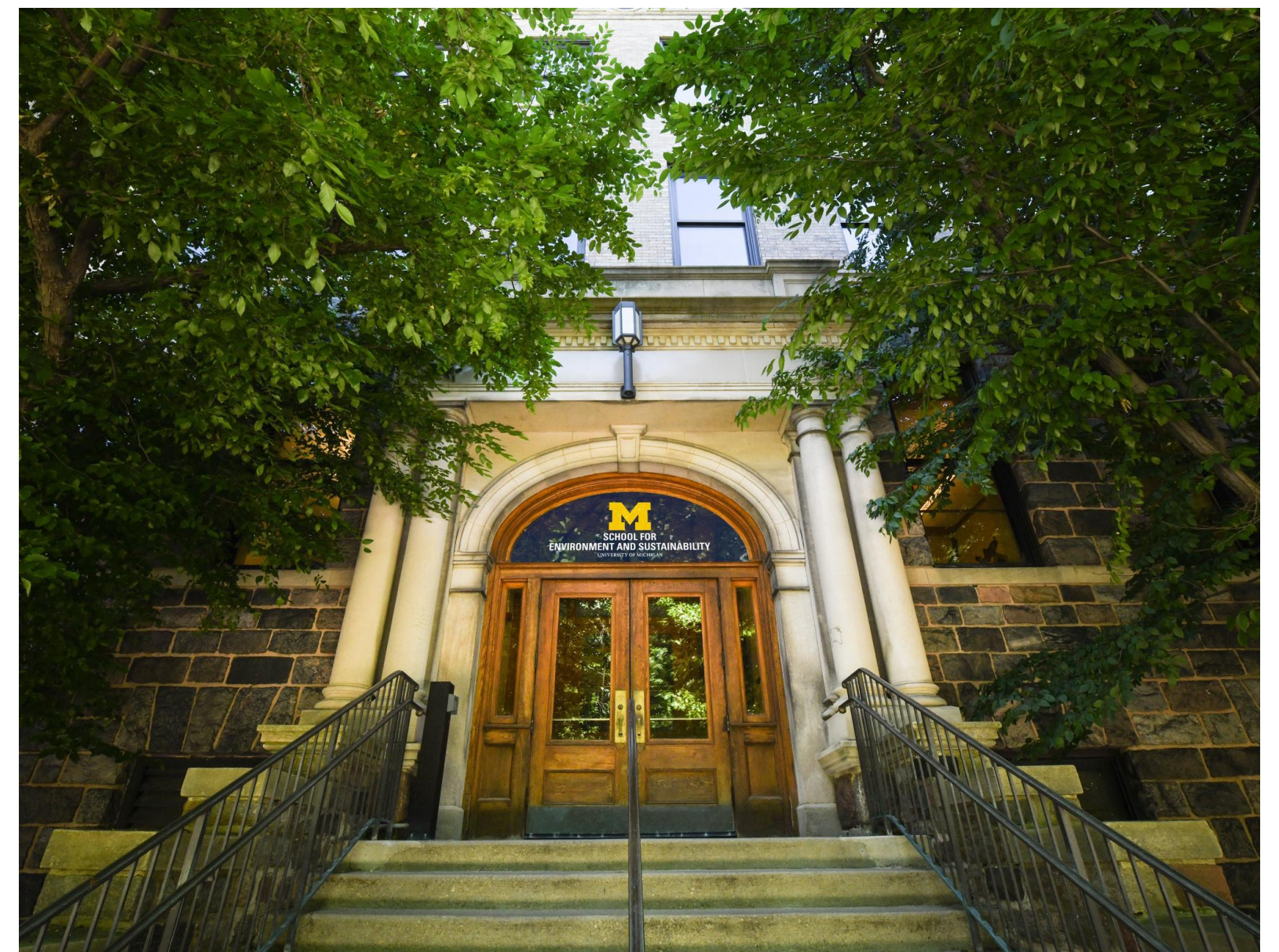
Alumni outcomes, data

05 SEAS, Ann Arbor, and U-M

Rankings, community, culture

06 Questions

Agenda





SEAS

Innovative, Integrated, Justice-Oriented, Entrepreneurial,
Global

Mission

At the University of Michigan School for Environment and Sustainability (SEAS), we are at the forefront of building a more sustainable and just world for all by transforming the impact of higher education and reimagining the future. We are advancing action through innovation, research, education and engagement in society, and developing leaders who are empowered to halt the climate crisis and create an environmentally sound future for generations to come.

Who We Are

Situated within the nation's top public research university, the University of Michigan School for Environment and Sustainability (SEAS) has been a pioneer in environmental education, research, and activism for more than a century.



Sustainability and Development

By completing the Sustainability and Development specialization, you become uniquely prepared to meet the rapidly growing need for trained professionals and researchers across the spectrum of sustainability and development sectors at local, national, and global scales.

The world needs you!

Sustainability and development pose **unprecedented** challenges for people and the planet. The world needs professionals with the **insights and training** to tackle those challenges!

Sustainable development treats sustainability as a **qualifier for development**, we want to place sustainability on **equal** footing with development



Core Faculty



Arun Agrawal

Professor



Bilal Butt

Associate Professor



Rajiv Ghimire

Lecturer



Keenan Gibbons

Intermittent Lecturer



Pamela Jagger

Professor, PhD/Postdoc
Program Director



**Maria Carmen
Lemos**

Professor



Andy White

Professor of Practice and
Engagement



Further Support

Affiliate Faculty

Jennifer Blesh

Ivette Perfecto

Rebecca Hardin

Ines Ibanez

Meha Jain

Shelie Miller

Samuel Stolper)

Staff

Cristy Watkins

Networks

A large network of domestic and international collaborators, colleagues and friends

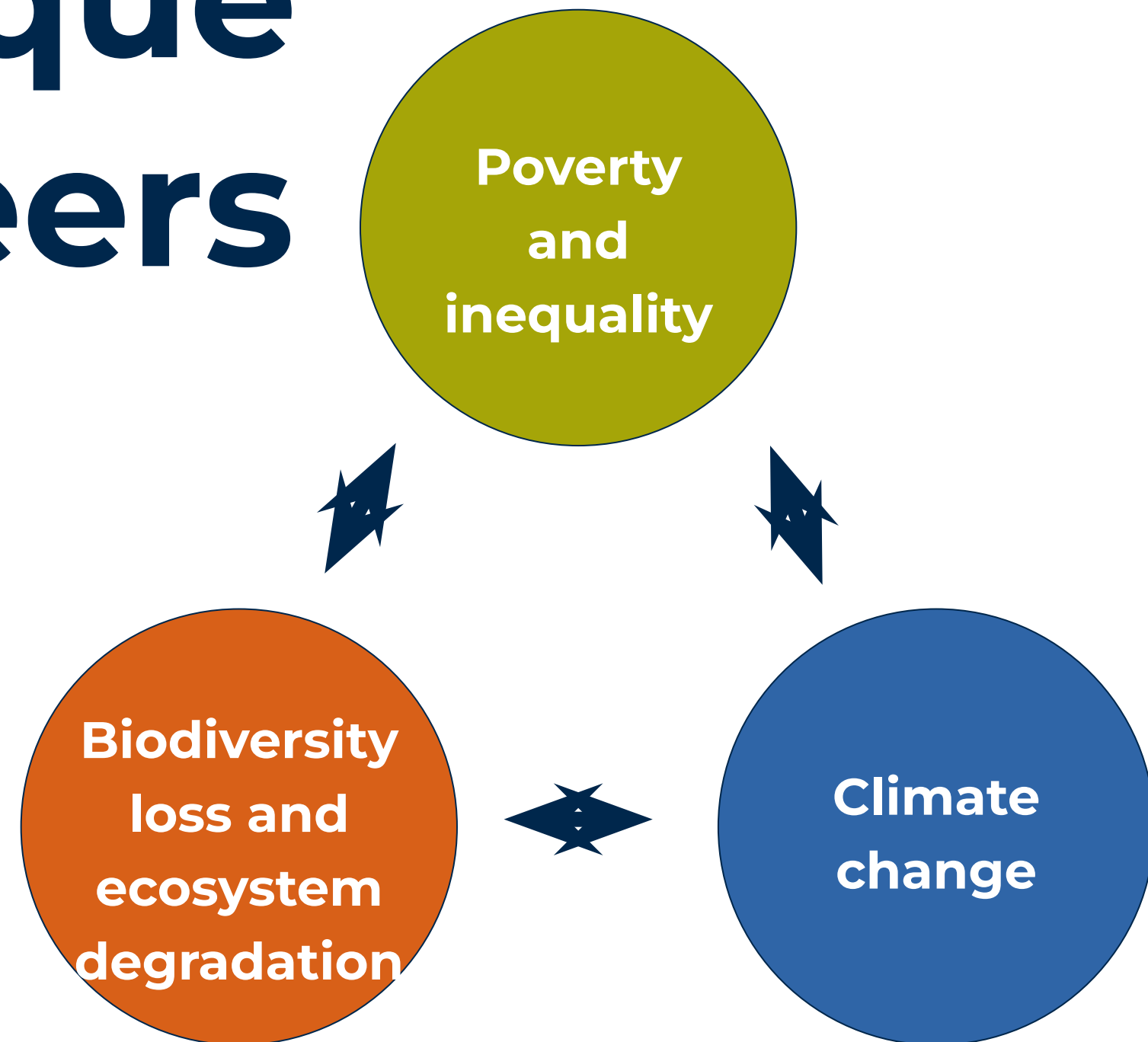
Student Track Leaders

Parker Wise, Simrin Dhillon, and Olivia Downey

SusDev is unique among our peers

We are tackling grand
challenges using:

- Development theory and practice
- Sustainability science
- Trade-off science
- Synthesis science
- Transition science
- Implementation science





Objectives

- Develop expertise in **conceptual, theoretical, and methodological** issues associated with sustainability and development
- **Understand the real-world practices** that have helped improve the well-being and have supported major sustainability transitions through new institutions, policies, and behaviors
- **Learn the methods and skills** necessary to implement new visions and practices for greater sustainability and well-being
 - **Core methods:** impact evaluation, cost benefit/life cycle/statistical analyses, geospatial analyses
 - **Professional skills:** negotiations, gender and diversity, conflict resolution, program management
 - **Commitment to diversity**

Pillars of SusDev



Sample Courses

- Foundations in SusDev:
Theories and Frameworks
- Cross Cutting issues on
SusDev
- Conservation and
Development
- Energy Justice
- Wildlife and Society
- Social Welfare Policy



Master's Project or Thesis

- 16-month group project
- Real client
- Real problem
- Professional learning
- Giveback to society



Core

- SEAS + SusDev Core
- Electives, Analytics
- Project, practicum, extra
courses
- Michigan Sustainability
Cases
- Conferences & engagement
opportunities



Dual Degrees

- Other U-M schools
 - Law
 - Public Policy
 - Business
 - Engineering
 - Education

Multiple SusDev Initiatives: NSS



Multiple SusDev Initiatives: PACT

Pathways Alliance for Change and Transformation (PACT)¹



ILEPA



Indigenous Peoples, Local Communities, and Trade in Terrestrial Carbon Markets: Time to Recognize Their Rights, Support Their Organizations, and Impose a Moratorium on Terrestrial Carbon Trade²



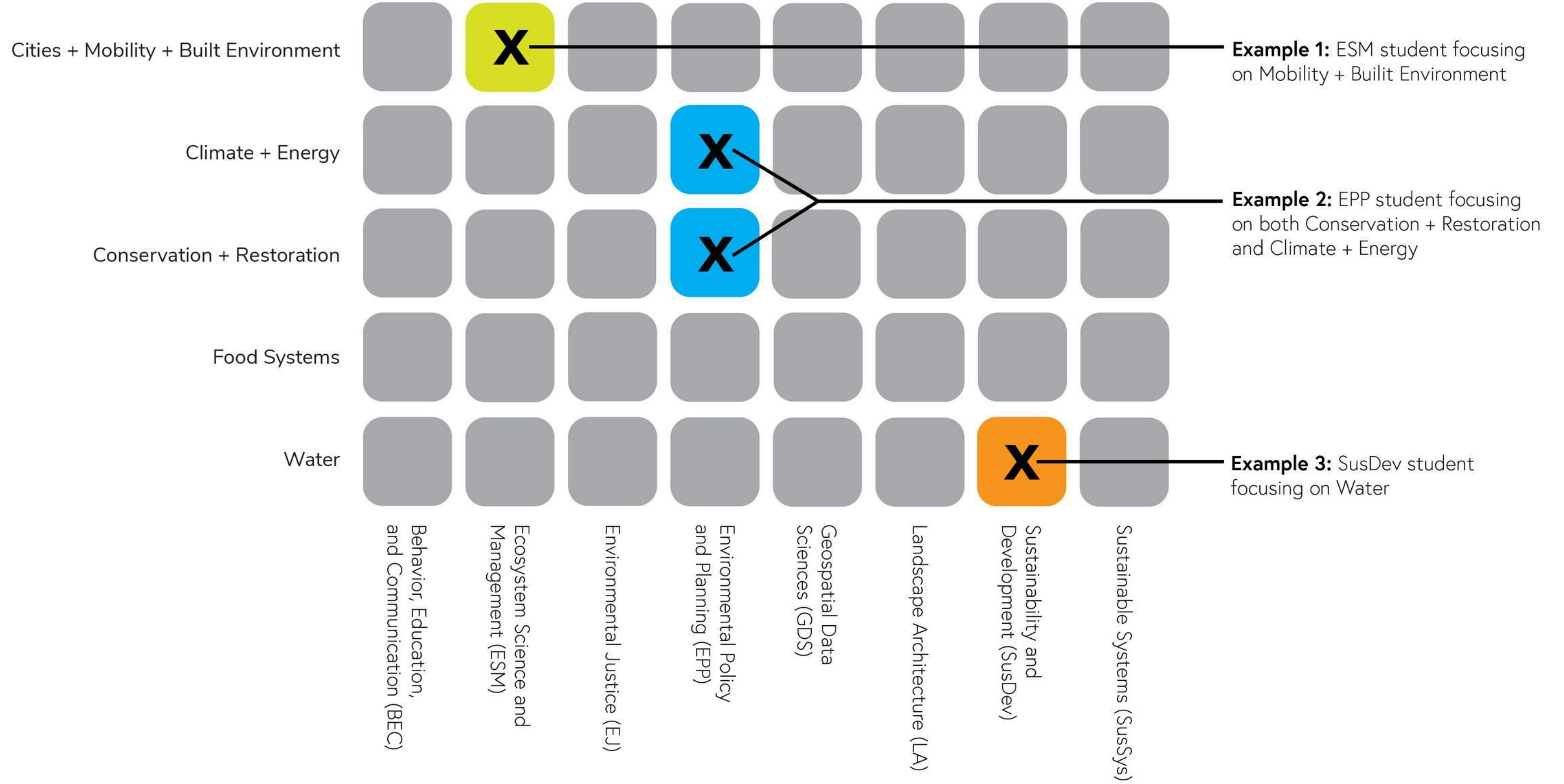


Tailoring your Degree Beyond your Specialization

Certificates

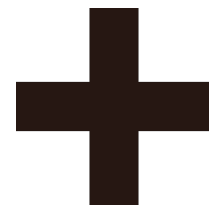
- Environmental Justice
- Industrial Ecology
- Spatial Analysis
- Sustainability
- Climate Change Solutions

Themes



Specializations

Dual Degrees



Master of science in engineering (MSE)

Master of business administration (MBA)

Master of urban and regional planning (MURP)

Master of science in public policy (MPP)

Juris doctor (JD)

Self-initiated dual degrees



Job Prospects

All Sectors

- Appx. 170K jobs advertised in sustainability, conservation, and international development last year (min. salary 75K, min. educational qualification = MS degree)
- Key skills employers are looking for: project management, data analysis, machine learning, negotiations, conflict management
- SEAS has a Careers Services Office to support and facilitate successful outcomes on the job market (employer relations, job customization and career services)



Career Outcomes



SATISFIED
WITH POST-
GRAD
POSITION



JOB
SEEKERS
FOUND
FULL-TIME
JOBS



FOUND
POSITION
WITHIN 6
MONTHS



The world needs you...

Sustainability and development pose unprecedented challenges for people and the planet. The world needs professionals with the insights and training to tackle those challenges! Sustainability and Development at U-M will empower you to make change.

Supportive Community

Largest living alumni body of any university

 **12,600+**

TOTAL ALUMNI, THE LARGEST
GRADUATE POPULATION OF ANY
ENVIRONMENTAL DEGREE
PROGRAM

 **33%**

OF SEAS ALUMNI
HAVE RECEIVED A
DUAL DEGREE FROM
ANOTHER ONE OF U-
M'S NATIONALLY
RANKED TOP 10
PROGRAMS

 **Alumni**

ARE REPRESENTED IN ALL
50 STATES AND 80+
COUNTRIES



Big Decisions

- Take your time
- Talk to your faculty and current SEAS students
- Talk to other admitted students at Visit Day
- Find your community
- Find your purpose

**Enrollment
deadline
April 15**



M | SEAS SCHOOL FOR ENVIRONMENT AND SUSTAINABILITY UNIVERSITY OF MICHIGAN

Come join us!

Questions?

Address

Dana Building
440 Church St
Ann Arbor, MI
48109

Website

seas.umich.edu

Specialization Coordinator

Arun Agrawal
arunagra@umich.edu

Pam Jagger
pjagger@umich.edu